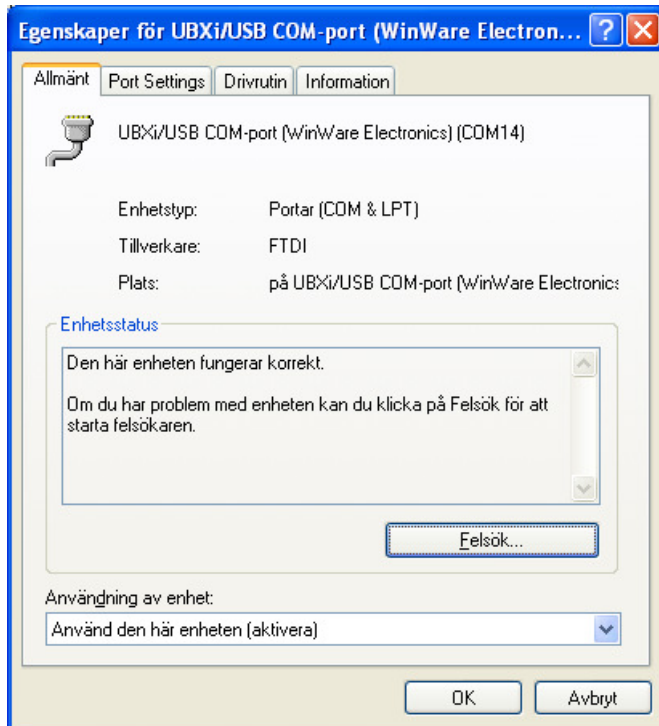


Setup the USB/VCP driver

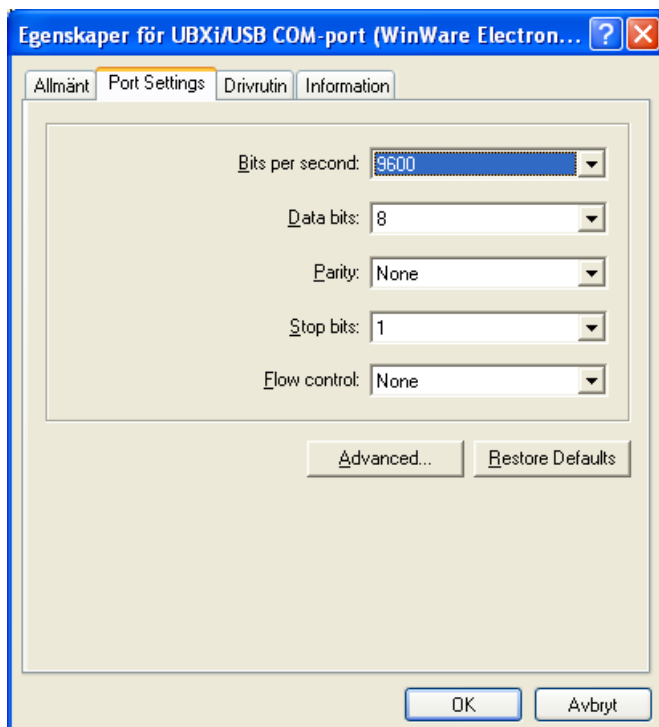
The USB hardware is based on an USB-circuit from **FTDI Chip**. FTDI Chip also supports a variety of standard USB drivers. For more information, see FTDI Home Page: <http://ftdichip.com/>

After the USB/VCP driver is installed, the driver should be setup (configured) as further described:

1. Open Windows Control Panel and System and choose Hardware.
2. Select the UBXi/USB installed COM-port, and open properties. It will show:



3. Select Port Settings. It wil show:



4. Click the Advanced button. It will show:

Advanced Settings for COM14

COM Port Number:

OK
Cancel
Defaults

USB Transfer Sizes

Select lower settings to correct performance problems at low baud rates.
Select higher settings for faster performance.

Receive (Bytes):

Transmit (Bytes):

BM Options

Select lower settings to correct response problems.

Latency Timer (msec):

Miscellaneous Options

Minimum Read Timeout (msec):

Minimum Write Timeout (msec):

Serial Enumerator

Serial Printer

Cancel If Power Off

Event On Surprise Removal

Set RTS On Close

5. Setup (change) if necessary the COM Port Number.
6. Set **all values** and **checking** as shown above.
7. Click OK and save.